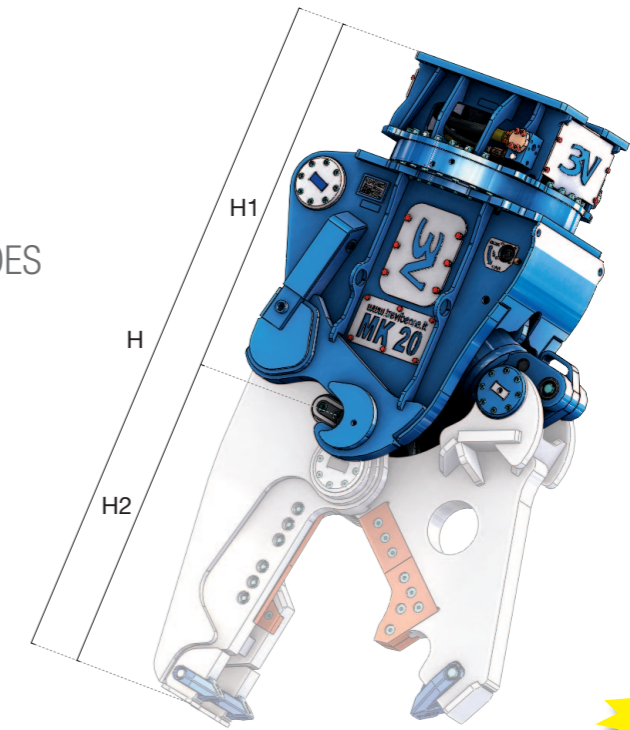


# Serie MK



## FRANTUMATORE MULTI KIT

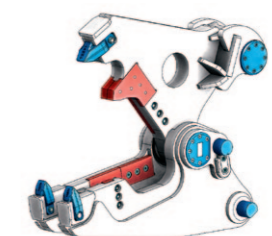
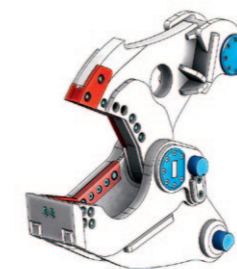
- MULTI KIT PULVERIZER
- BROYEUR MULTI KIT
- DEMOLEDOR MULTI KIT
- MEHRZWECKGERÄT MULTI KIT
- GARRA DEMOLIDORA MULTIFUNÇÕES



**NEW** **NEW**

		MK 10*	MK 13*	MK 15	MK 20	MK 25	MK 35	MK 50	MK 70
	kg.	600	795	1180	1465	1970	2150	3420	5020
	H1** mm.	1000	1055	1220	1330	1370	1375	1540	1720
	bar	310	310	310	310	310	310	340	340
	l/min.	150 / 250	180 / 250	180 / 250	200 / 300	250 / 350	300 / 400	400 / 500	450 / 600
	max bar	140	140	140	140	140	140	140	140
	max l/min.	10	10	10	10	10	10	30	30
		/	/	/	/	/	/	✓	✓

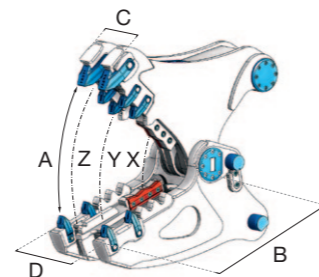
(\*) Versione meccanica / (\*) Mechanical version / (\*) Version mécanique / (\*) Versión mecánica / (\*) Mechanischer Version / (\*) Versão mecânica  
 (\*\*) H = H1 + H2



model				model			
MK 10	8	14	9	MK 25	33	48	35
MK 13	11	20	12	MK 35	43	65	45
MK 15	17	27	18	MK 50	58	80	60
MK 20	24	38	25	MK 70	72	110	75

(1) Accoppiamento escavatore-attrezzatura ottimale / Optimum excavator-equipment combination  
 Couplage pelle-équipement optimale / Acoplamiento excavadora-implemento optimal  
 Optimale Bagger-Ausrüstung Kombination / Combinação máquina-implemento ideal

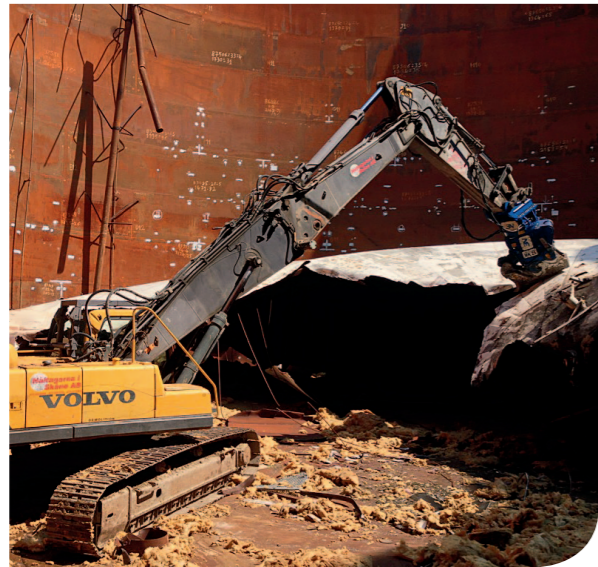
(2) Accoppiamento escavatore-attrezzatura possibile / Possible excavator-equipment combination  
 Couplage pelle-équipement possible / Acoplamiento excavadora-implemento possible  
 Mögliche Bagger-Ausrüstung Kombination / Combinação máquina-implemento possível



		Kit FR							
		MK 10	MK 13	MK 15	MK 20	MK 25	MK 35	MK 50	MK 70
	kg.	410	635	680	1035	1270	1720	2940	3940
A	mm.	660	720	740	880	905	970	1100	1300
B	mm.	610	630	660	790	820	860	1030	1130
C	mm.	220	235	300	310	360	390	440	500
D	mm.	355	390	465	485	570	640	720	770
	mm.	140	180	220	260	260	260	260	325
H2**	mm.	780	870	890	1045	1100	1210	1440	1580
X	t.	85	125	190	205	290	330	400	535
Y	t.	60	65	100	125	135	180	220	285
Z	t.	40	50	65	80	105	115	140	190
∅ max	mm.	25	30	35	40	45	50	60	75
	IPN max mm.	/	/	/	/	/	/	/	/
	HEA max mm.	/	/	/	/	/	/	/	/
	max mm.	/	/	/	/	/	/	/	/

		Kit CS								Kit CB							
		MK 10	MK 13	MK 15	MK 20	MK 25	MK 35	MK 50	MK 70	MK 10	MK 13	MK 15	MK 20	MK 25	MK 35	MK 50	MK 70
	kg.	360	580	630	950	1240	1425	2290	2850	450	585	720	1090	1305	1780	2900	3890
A	mm.	340	400	420	480	500	525	575	700	580	640	740	810	850	910	990	1160
B	mm.	400	450	485	525	560	565	660	755	560	700	740	800	815	875	1065	1180
C	mm.	75	80	100	120	130	130	135	165	100	100	110	130	130	130	175	185
D	mm.	300	300	330	380	435	435	480	550	290	310	320	350	415	410	560	610
	mm.	370	410	470	510	565	565	660	755	350	400	420	480	500	500	575	640
H2**	mm.	630	725	775	890	935	990	1150	1300	800	920	1000	1125	1155	1255	1490	1640
X	t.	250	310	380	515	720	740	875	1100	220	270	360	510	630	740	900	1010
Y	t.	100	120	155	235	290	315	385	470	60	65	95	125	155	175	220	290
Z	t.	60	75	85	125	145	160	205	240	40	50	60	80	105	115	140	185
∅ max	mm.	35	40	50	60	65	70	90	110	30	35	40	45	50	55	70	85
	IPN max mm.	120	140	210	360	380	400	500	600	/	/	/	/	/	/	/	/
	HEA max mm.	100	120	140	230	250	260	300	400	/	/	/	/	/	/	/	/
	max mm.	/	/	/	/	/	/	/	/	/	/	/	/	/	/	/	/

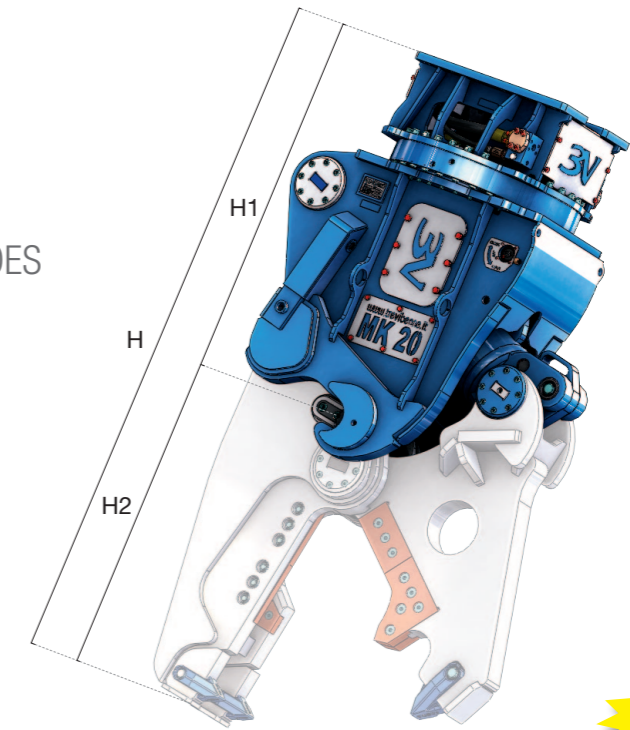




# Serie MK

## FRANTUMATORE MULTI KIT

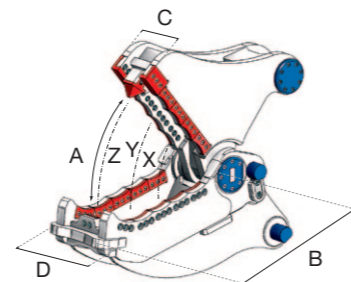
- MULTI KIT PULVERIZER
- BROYEUR MULTI KIT
- DEMOLEDOR MULTI KIT
- MEHRZWECKGERÄT MULTI KIT
- GARRA DEMOLIDORA MULTIFUNÇÕES



model	(2)	(1)	(2)	ton	model	(2)	(1)	(2)	ton
MK 10	8	9	12	14	MK 25	33	35	45	48
MK 13	11	12	18	20	MK 35	43	45	60	65
MK 15	17	18	25	27	MK 50	58	60	75	80
MK 20	24	25	35	38	MK 70	72	75	100	110

(1) Accoppiamento escavatore-attrezzatura ottimale / Optimum excavator-equipment combination  
 Couplage pelle-équipement optimale / Acoplamiento excavadora-implimento optimal  
 Optimale Bagger-Ausrüstung Kombination / Combinação máquina-implimento ideal

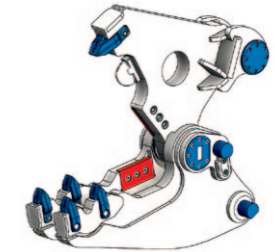
(2) Accoppiamento escavatore-attrezzatura possibile / Possible excavator-equipment combination  
 Couplage pelle-équipement possible / Acoplamiento excavadora-implimento possível  
 Mögliche Bagger-Ausrüstung Kombination / Combinação máquina-implimento possível



		Kit CH							
		MK 10	MK 13	MK 15	MK 20	MK 25	MK 35	MK 50	MK 70
kg	kg.	*	610	740	1000	1300	1590	*	*
A	mm.	*	445	500	635	550	720	*	*
B	mm.	*	580	615	750	785	960	*	*
C	mm.	*	235	275	295	350	350	*	*
D	mm.	*	335	395	415	475	475	*	*
	mm.	*	530	530	660	600	750	*	*
H2**	mm.	*	900	910	1080	1100	1280	*	*
X	t.	*	245	260	375	720	740	*	*
Y	t.	*	105	115	150	215	220	*	*
Z	t.	*	60	80	100	130	135	*	*
∅ max	mm.	*	40	45	50	55	60	*	*
IPN max	mm.	/	/	/	/	/	/	/	/
HEA max	mm.	/	/	/	/	/	/	/	/
max	mm.	/	/	/	/	/	/	/	/

		MK 10*	MK 13*	MK 15	MK 20	MK 25	MK 35	MK 50	MK 70
kg	kg.	600	795	1180	1465	1970	2150	3420	5020
H1**	mm.	1000	1055	1220	1330	1370	1375	1540	1720
∅	bar	310	310	310	310	310	310	340	340
l/min.	l/min.	150 / 250	180 / 250	180 / 250	200 / 300	250 / 350	300 / 400	400 / 500	450 / 600
max	bar	140	140	140	140	140	140	140	140
max	l/min.	10	10	10	10	10	10	30	30
		/	/	/	/	/	/	√	√

(\*) Versione meccanica / (\*) Mechanical version / (\*) Version mécanique / (\*) Versión mecánica / (\*) Mechanischer Version / (\*) Versão mecânica  
 (\*\*) H = H1 + H2



		Kit CL								Kit HC							
		MK 10	MK 13	MK 15	MK 20	MK 25	MK 35	MK 50	MK 70	MK 10	MK 13	MK 15	MK 20	MK 25	MK 35	MK 50	MK 70
kg	kg.	*	*	560	1000	1400	1750	*	*	435	575	680	1075	1235	1700	2750	*
A	mm.	*	*	270	350	370	400	*	*	605	680	745	870	880	925	1010	*
B	mm.	*	*	360	465	520	780	*	*	610	710	740	765	815	875	1070	*
C	mm.	*	*	115	145	150	160	*	*	100	100	110	130	130	130	175	*
D	mm.	*	*	310	390	440	480	*	*	300	300	340	350	400	450	550	*
	mm.	*	*	320	400	430	480	*	*	150	200	175	240	250	250	290	*
H2**	mm.	*	*	505	630	695	750	*	*	810	925	1005	1125	1170	1275	1500	*
X	t.	*	*	220	270	320	350	*	*	135	165	220	290	350	385	465	*
Y	t.	*	*	150	200	225	230	*	*	60	75	90	130	150	180	220	*
Z	t.	/	/	110	140	160	170	*	*	40	50	65	85	105	115	140	*
∅ max	mm.	/	/	/	/	/	/	/	/	25	30	35	40	45	50	60	*
IPN max	mm.	/	/	/	/	/	/	/	/	/	/	/	/	/	/	/	/
HEA max	mm.	/	/	/	/	/	/	/	/	/	/	/	/	/	/	/	/
max	mm.	*	*	10	12	14	16	*	*	/	/	/	/	/	/	/	/

(\*) Disponibile su richiesta / (\*) Available on request / (\*) Disponible sur demande / (\*) Disponible a petición / (\*) Verfügbar auf Anfrage / (\*) Disponível para pedido

